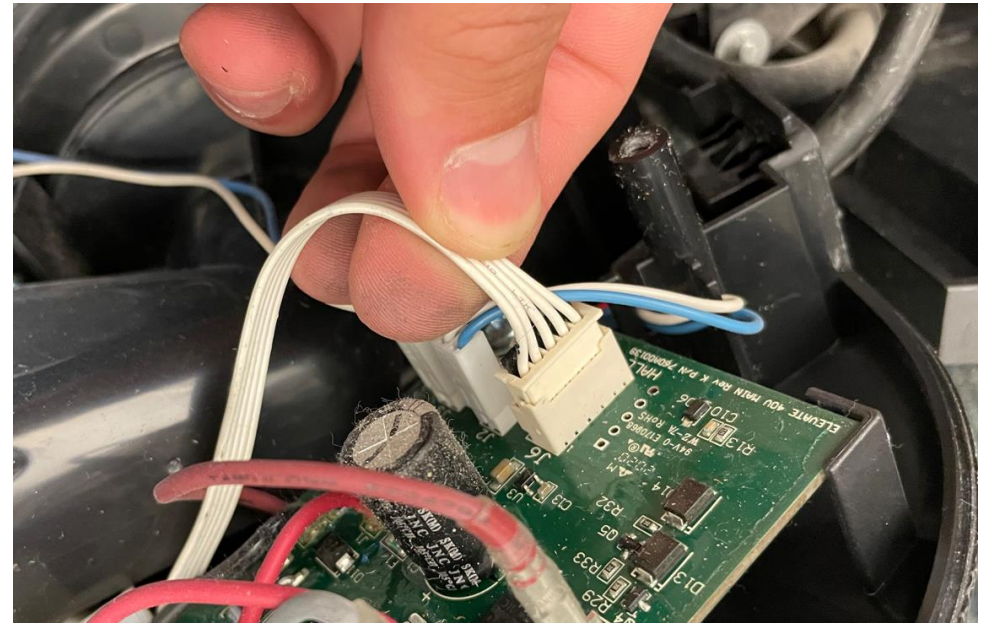
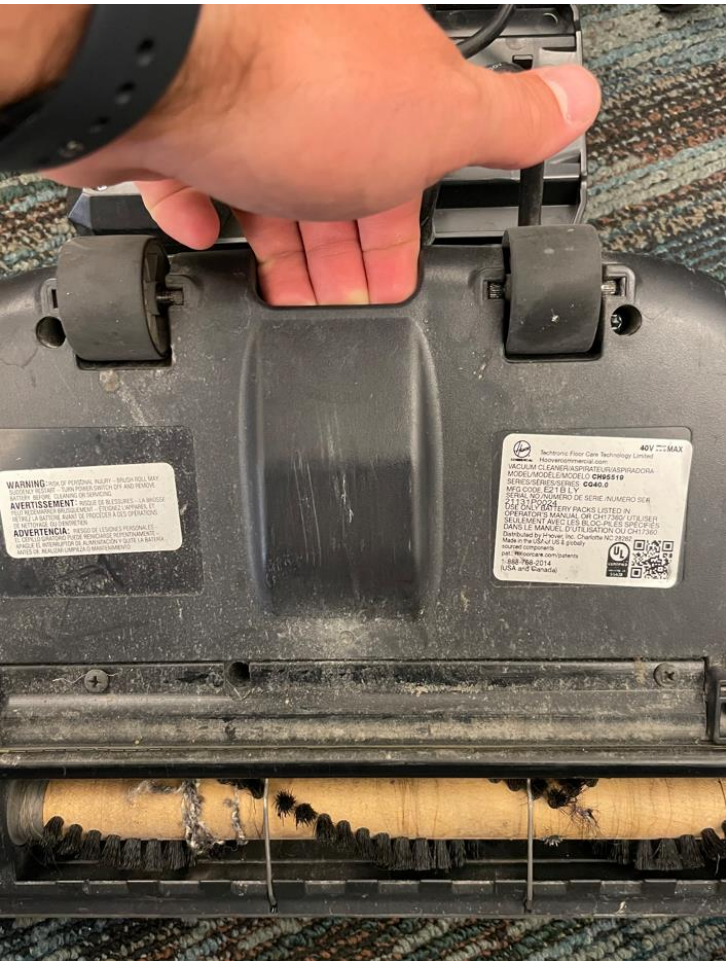


CM043 40V Upright

Hall Board Sensor Replacement Work Instructions



- Remove the seven T-15 screws from the bottom plate indicated by red circles



- Remove the bottom plate by pulling up in between the two rear wheels
- Remove the brushroll to get access to two Philips head screws that hold the top cover
- Remove the two screws
- Detach the 5-pin connector



- Remove the top cover
- Guide the 5-pin connector through the hole in the top cover
- Remove the hall board and replace with good part

From here you just need to reassemble the unit in the reverse steps and should be good to go